

VERSION 2 . VERSION 2 .
VERSION 2 . VERSION 2 .

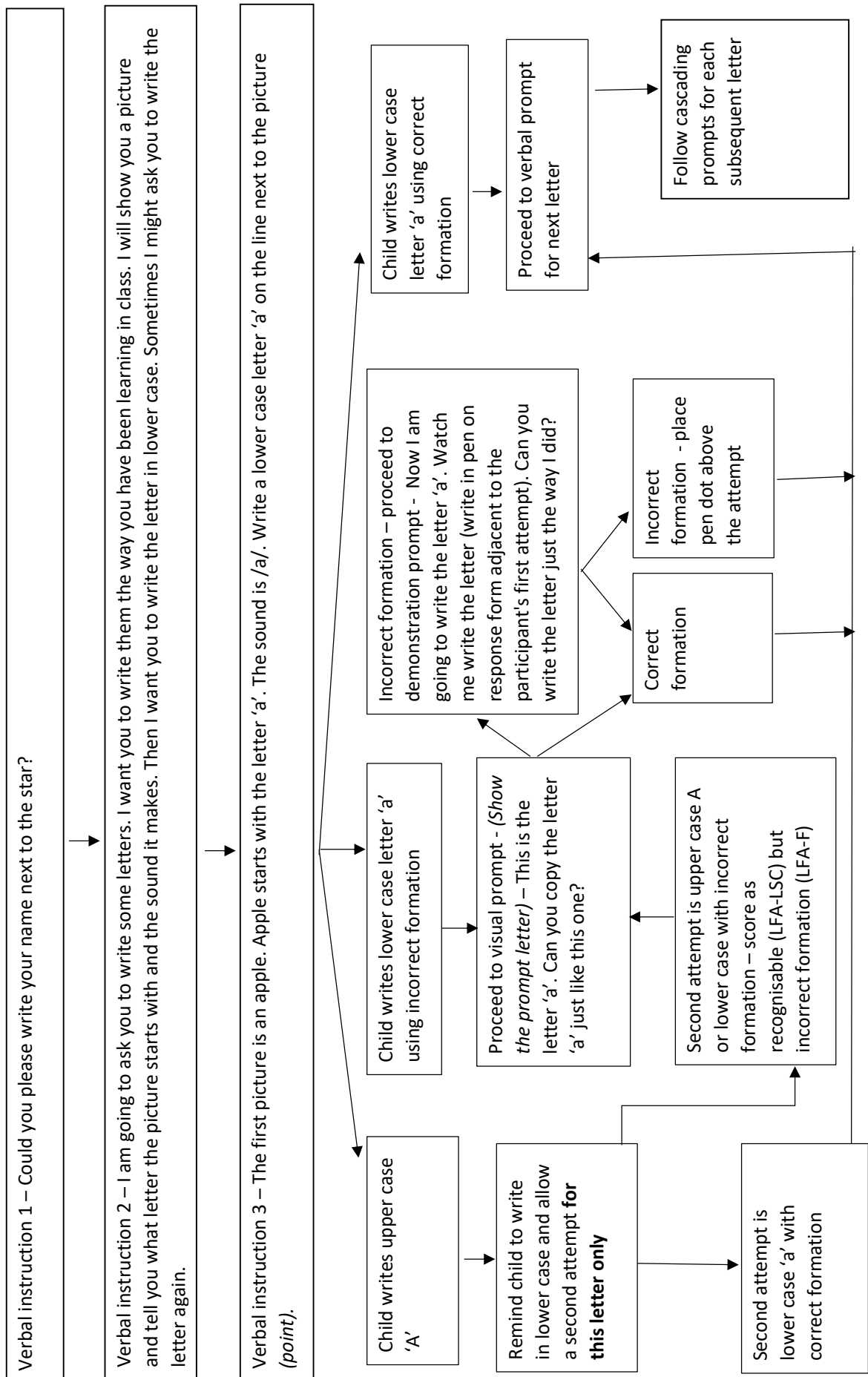


LETTER FORM ASSESSMENT

**An assessment of handwriting fluency acquisition
for beginning writers.**

*© 2023 Karen Ray. This work is licensed under CC BY-NC-ND 4.0. Images
are all rights reserved to owners noted and are excluded from this licence.
Cover image via iStock. Used under licence.*

LFA ADMINISTRATION PROCEDURE



L F A S C O R E S H E E T

| | | | |
|------------------|--|-------------------|--|
| Name | | Date | |
| DOB | | Chronological Age | |
| Grade | | Teacher | |
| LFA-LSC: /26 | | LFA-F: /104 | |

| | LFA-LSC | LFA-F | | | | |
|----------|--|--------------------------------------|--------------------------------|-----------------------|--|---------------------------|
| | Recognisable letter 1 = yes, 0 = no | Correct formation from memory (4) | Correct copy from model (3) | Correct imitation (2) | Recognisable letter, incorrect formation (1) | Unrecognisable letter (0) |
| a | | | | | | |
| m | | | | | | |
| t | | | | | | |
| s | | | | | | |
| i | | | | | | |
| f | | | | | | |
| d | | | | | | |
| r | | | | | | |
| o | | | | | | |
| g | | | | | | |
| l | | | | | | |
| h | | | | | | |
| u | | | | | | |
| c | | | | | | |
| b | | | | | | |
| n | | | | | | |
| k | | | | | | |
| v | | | | | | |
| e | | | | | | |
| w | | | | | | |
| j | | | | | | |
| p | | | | | | |
| y | | | | | | |
| x | | | | | | |
| q | | | | | | |
| z | | | | | | |
| Subtotal | | | | | | |
| Totals | / 26 | / 104 | | | | |

EXAMINER SCRIPT

1. Could you please write your name next to the star?
2. I am going to ask you to write some letters. I want you to write them the way you have been learning in class. I will show you a picture and tell you what letter the picture starts with and the sound it makes. Then I want you to write the letter in lower case. Sometimes I might ask you to write the letter again.
3. The first picture is an apple. Apple starts with the letter 'a'. The sound is /a/. Write a lower case letter 'a' on the line next to the picture (point).

If formation error noted:

1. I am going to show you the letter for you to copy.
2. (Show the prompt letter) – This is the letter 'a'. Can you copy the letter a just like this one?

NB – if student first attempt is recognisable but formed incorrectly (e.g. wrong start point, use of extra strokes to form letter), say 'that looks just the same – now I'm going to show it to you – can you write it again?'

If formation error noted in copying:

1. Now I am going to write the letter 'a'. Watch me write the letter (write in pen on test sheet). Can you write the letter just the way I did? If formation error imitating move onto next letter.

If formation error imitating:

1. Mark attempt with a dot, and move onto the next letter.

Scoring

- 4 – Correct formation from memory
- 3 – Correct formation from copying
- 2 – Correct formation from imitation
- 1 – Incorrect formation but recognisable letter
- 0 – Non recognisable letter









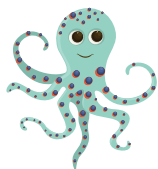














































GLOSSARY OF PICTURE NAMES

a - apple

m - mouse

t - tiger

s - snail

i - igloo

f - frog

d - dog

r - ring

o - octopus

g - goat

l - lizard

h - hat

u - umbrella

c - cat

b - butterfly

n - nose

k - koala

v - volcano

e - egg

w - witch

j - jellyfish

p - pencil

y - yoyo

x - x-ray

q - queen

z - zebra

LETTER FORM ASSESSMENT

This tool must be used in conjunction with the LFA User Instructions and Training Module and without modification.
<https://hdl.handle.net/1959.13/1468664>

© 2023 Karen Ray, licensed under CC BY-NC-ND 4.0.
This licence allows users to download, share and use/print the tool, but limits modification and commercial use. For more information see <https://creativecommons.org/licenses/by-nc-nd/4.0/>
Images are all rights reserved to owners noted and are excluded from this licence.

